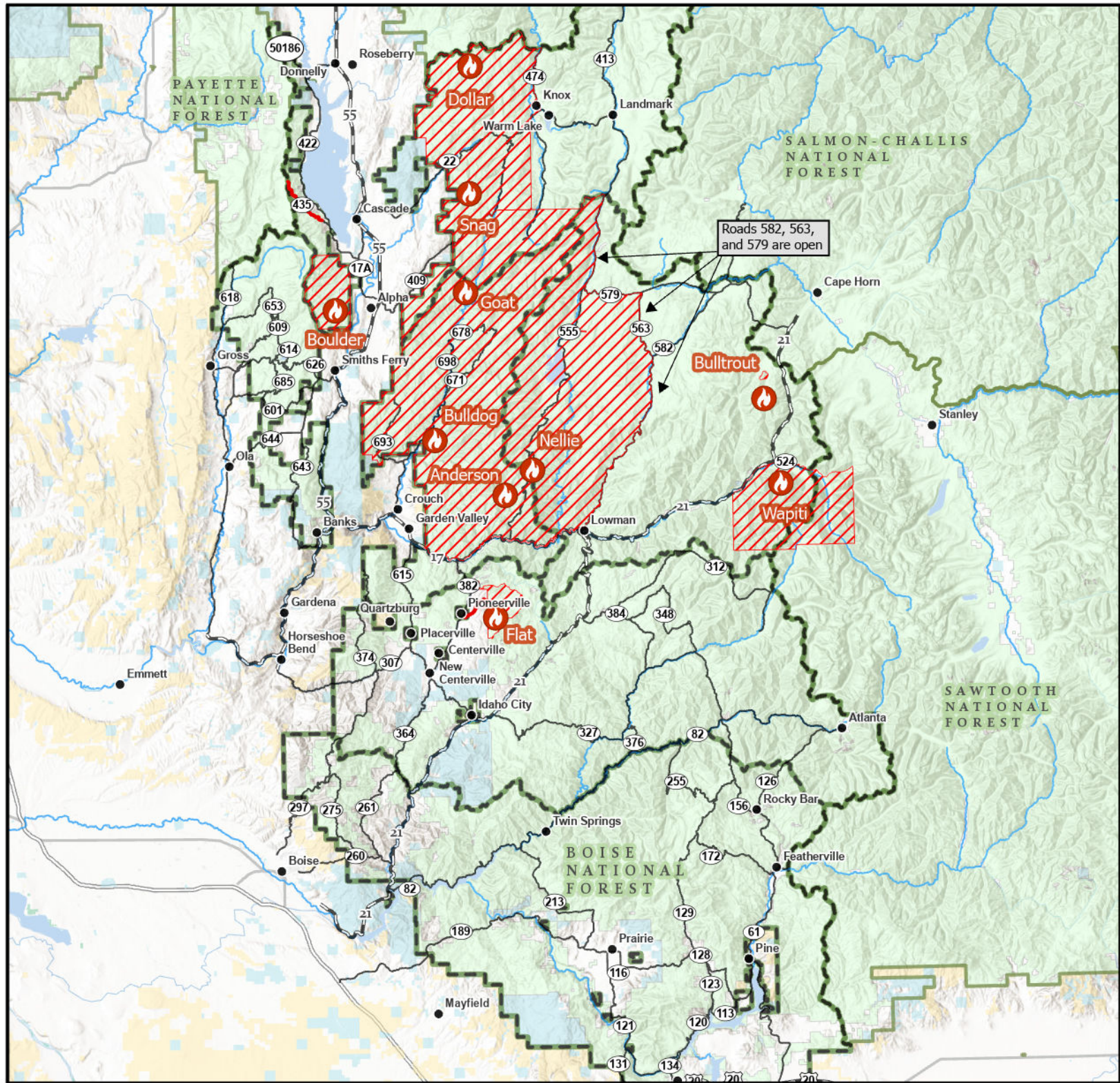




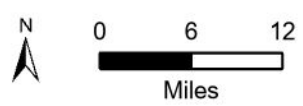
Boise National Forest - Active Fires & Closures

August 12, 2024



Active Fires	Highway	Bureau of Land Management
Active Road Closures	Road	U.S. Fish and Wildlife Service
Active Closure Area	Lake/Reservoir	Other Federal Lands
	River	State Lands
	Town	Private, Local Government, Undesignated
	Boise National Forest Boundary	Forest Service Lands

The USDA Forest Service makes no warranty, expressed or implied, including the warranties of merchantability and fitness for a particular purpose, nor assumes any legal liability or responsibility for the accuracy, reliability, completeness or utility of these geospatial data, or for the improper or incorrect use of these geospatial data. These geospatial data and related maps or graphics are not legal documents and are not intended to be used as such. The data and maps may not be used to determine title, ownership, legal descriptions or boundaries, legal jurisdiction, or restrictions that may be in place on either public or private land. Natural hazards may or may not be depicted on the data and maps, and users should exercise due caution. The data are dynamic and may change over time. The user is responsible to verify the limitations of the geospatial data and to use the data accordingly.



Prepared by: Information Resources Management
Supervisor's Office
Boise National Forest
Boise, Idaho

Produced: 8/12/2024 By: ClaytonLenz
Projection: UTM 11 N, NAD83
File: T:\FS\NFS\Boise\Program\5300LawEnforcement\GIS\SpecialOrders\2024\ActiveFiresandClosures.aprx